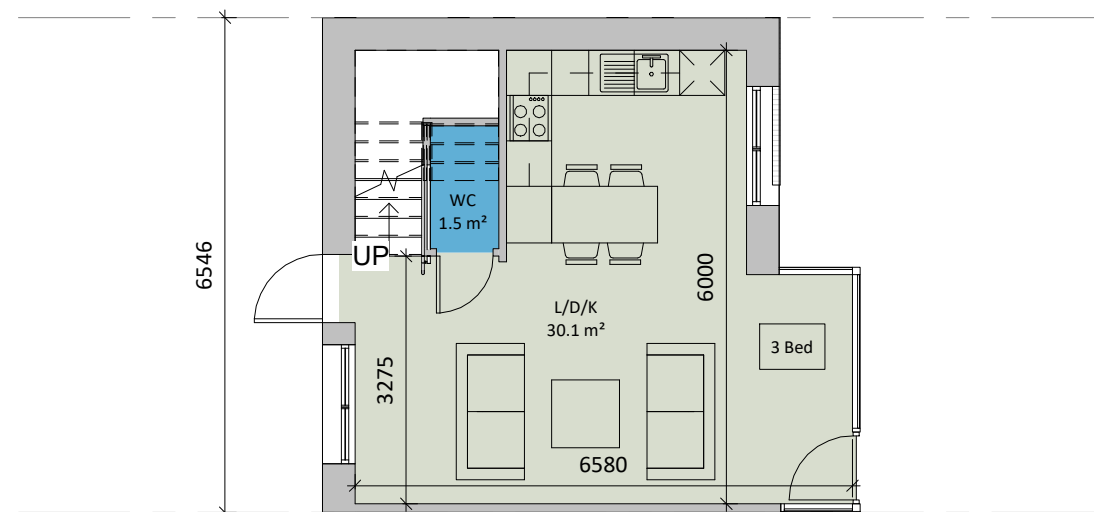


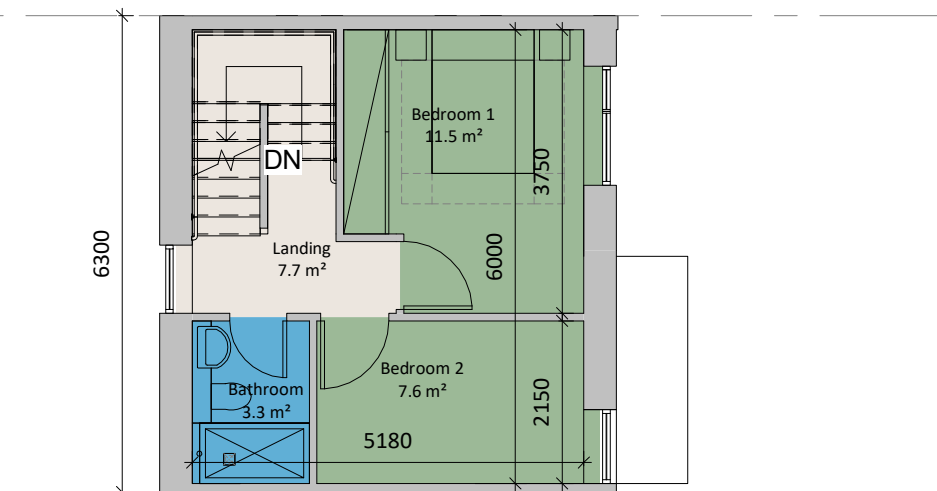
1 Level 00 - Typical Unit
1:100



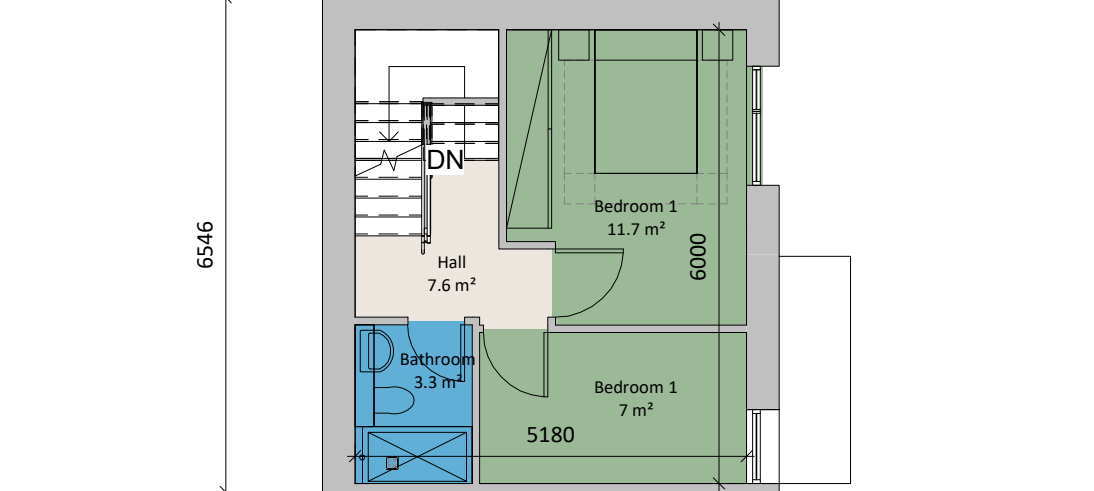
5 Level 00 - End of Terrace
1:100



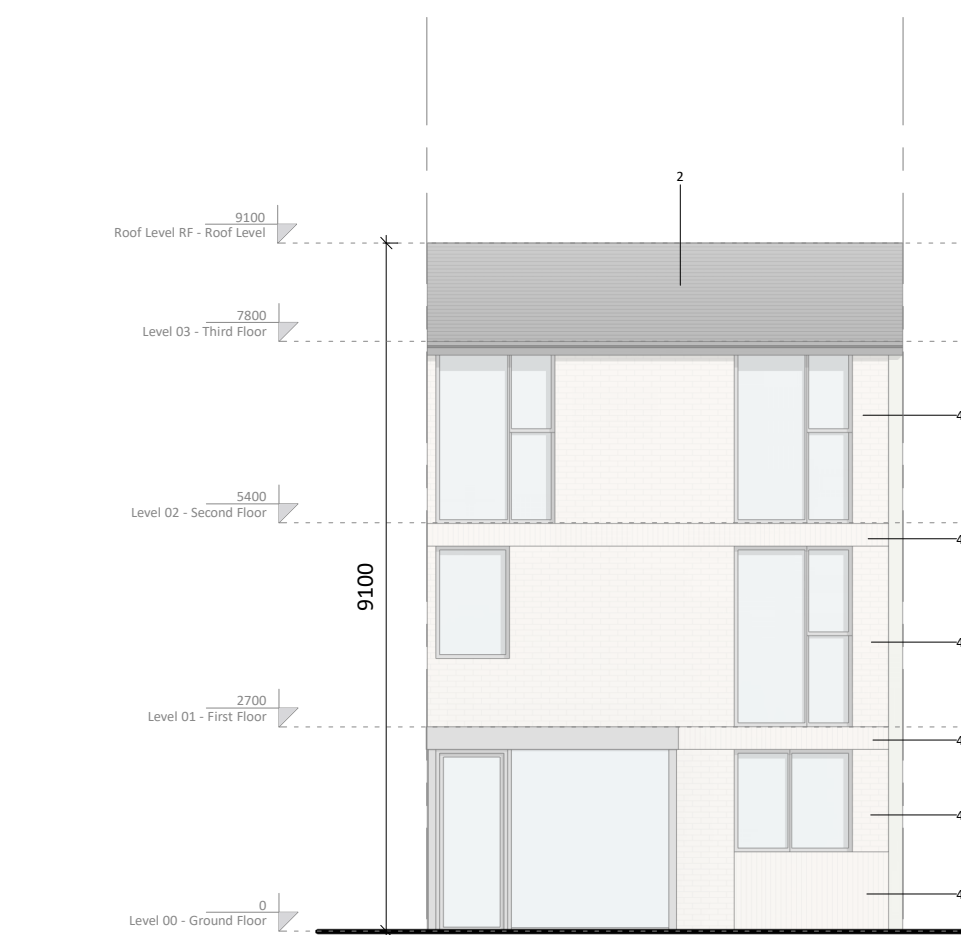
9 End of Terrace North Elevation
1:100



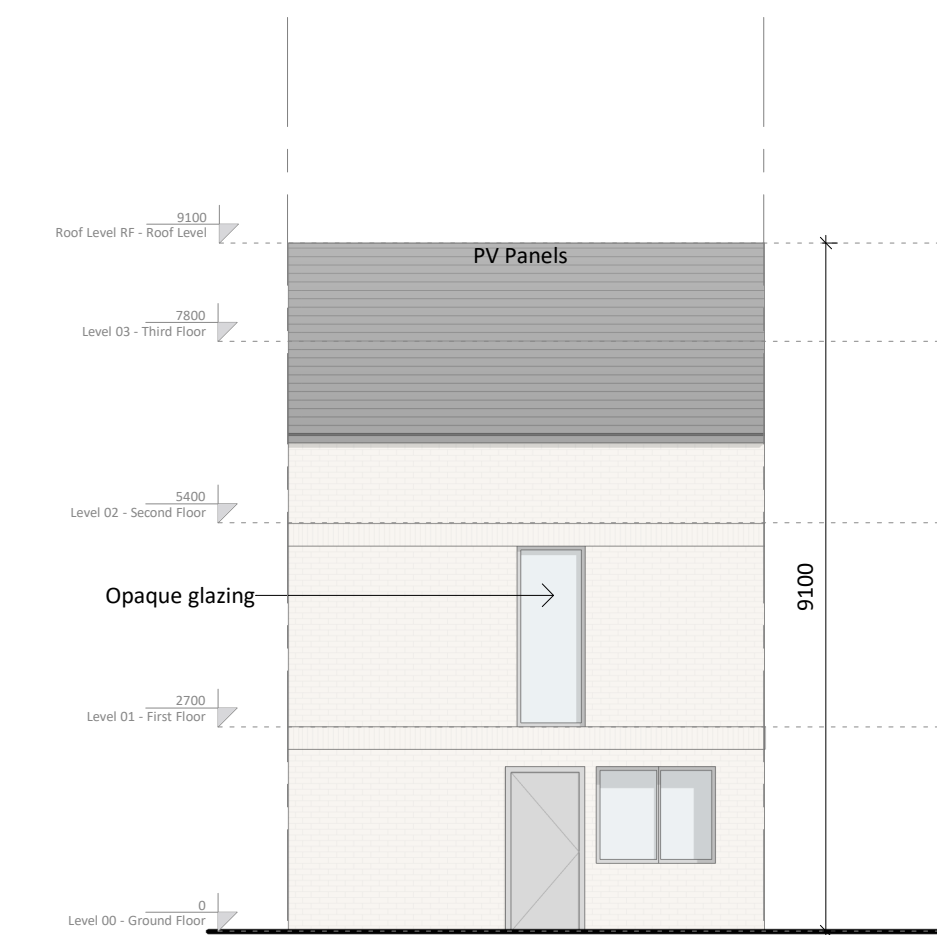
2 Level 01 - Typical Unit
1:100



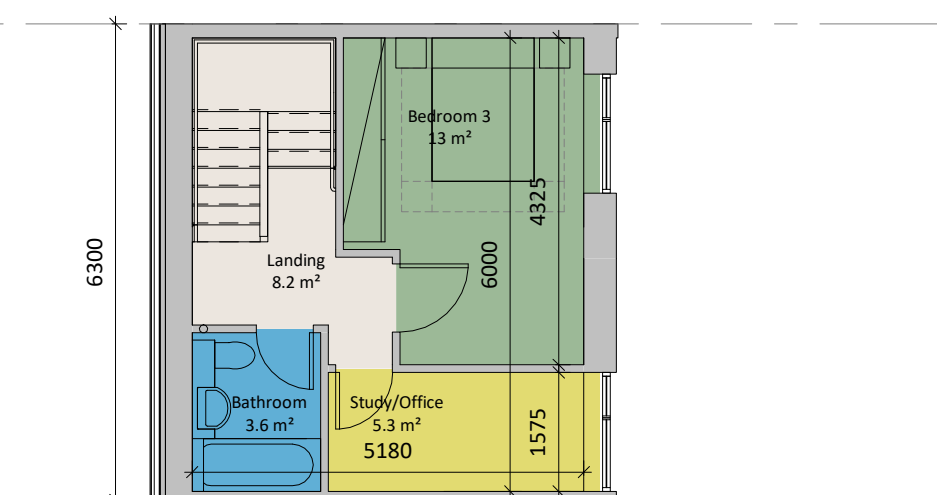
6 Level 01 - End of Terrace
1:100



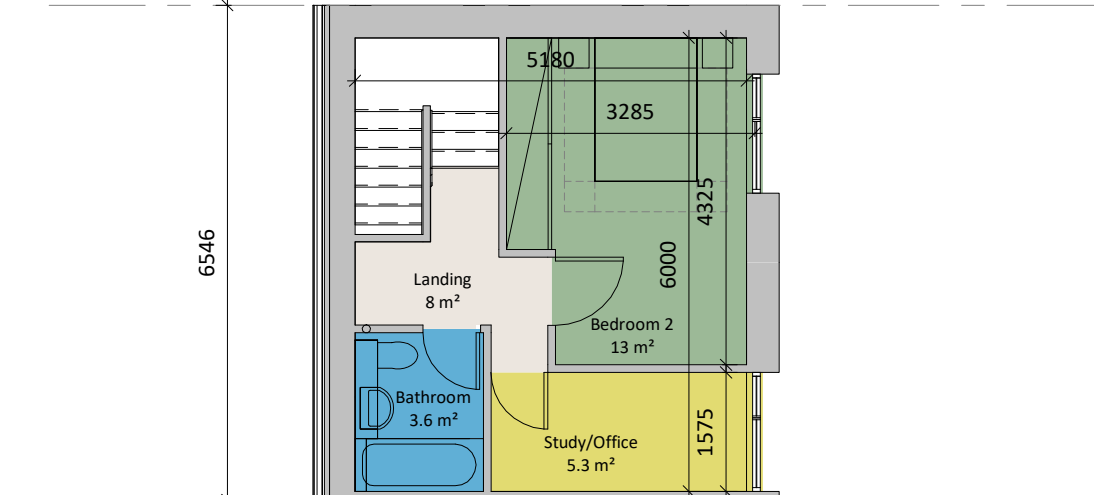
10 Front Elevation
1:100



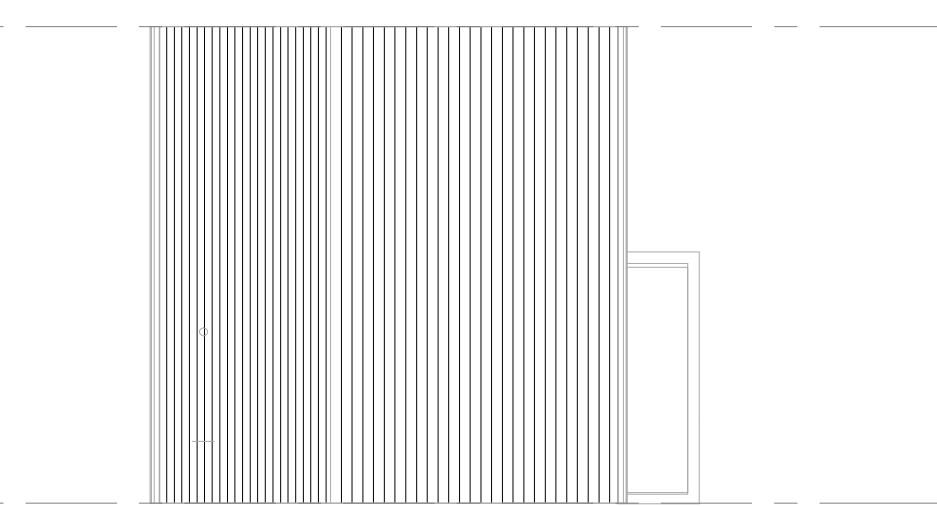
11 Back Elevation
1:100



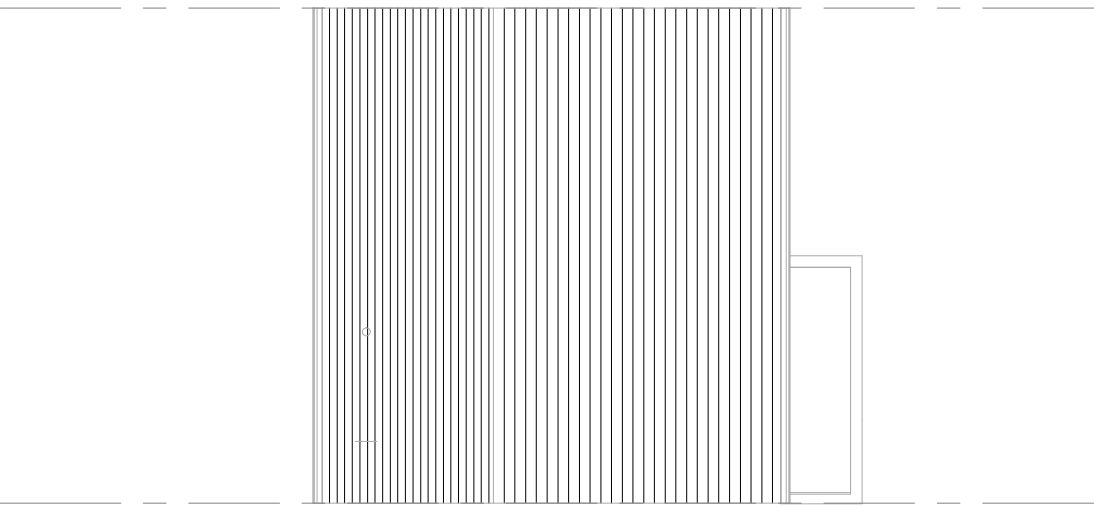
3 Level 02 - Typical Unit
1:100



7 Level 02 - End of Terrace
1:100



4 Roof Level RF - Typical Unit
1:100



8 Roof Level RF - End of Terrace
1:100



12 Section A-A
1:100

House Type H3A

Material Key

- 1 Selected Render Finish
- 2 Selected Tile/Slate Finish to Roof
- 4a Selected Buff Brick (Light)



Revision Description	Date	Rev. No.	Issued by
Stage 3 submission to ABP	16.03.2022	C01	MH

omahony pike
architecture | urban design
email: info@omahonypike.com
tel: +353 1 202 7400
fax: +353 1 283 0822
www.omahonypike.com

Project Code: 20016
Project Lead: MH
Drawn By: KN/JW
Job No.: 20016
Purpose: PLANNING

Scale @ A1: 1:100
Date: 16.03.2022
Revision: C01
Status: A3

Project: White Heather SHD
Location: White Heather Industrial Estate, South Circular Road, Dublin 8
Client: U + I (White Heather) Limited

Drawing Title: House Type H3A
Drawing No.: 20016-OMP-H3A-ZZ-DR-A-1000

Source File: 20016-OMP-H3A-ZZ-M3-A-0001.rvt

Any reference to fire safety design or performance is presented for coordination purposes only. Refer only to the granted Fire Safety Certificate, and fire consultant's information for fire safety design, specification and performance.

Figured dimensions only to be used. This drawing is copyright of O'Mahony Pike Architects Ltd. All information is shared as per approved use in accordance with ISO19650-2:2018, Table 5; Standard Codes for Suitability of Models and Documents and the BEP. If the 'Status' field is empty, this information has been shared at S0 - WIP.