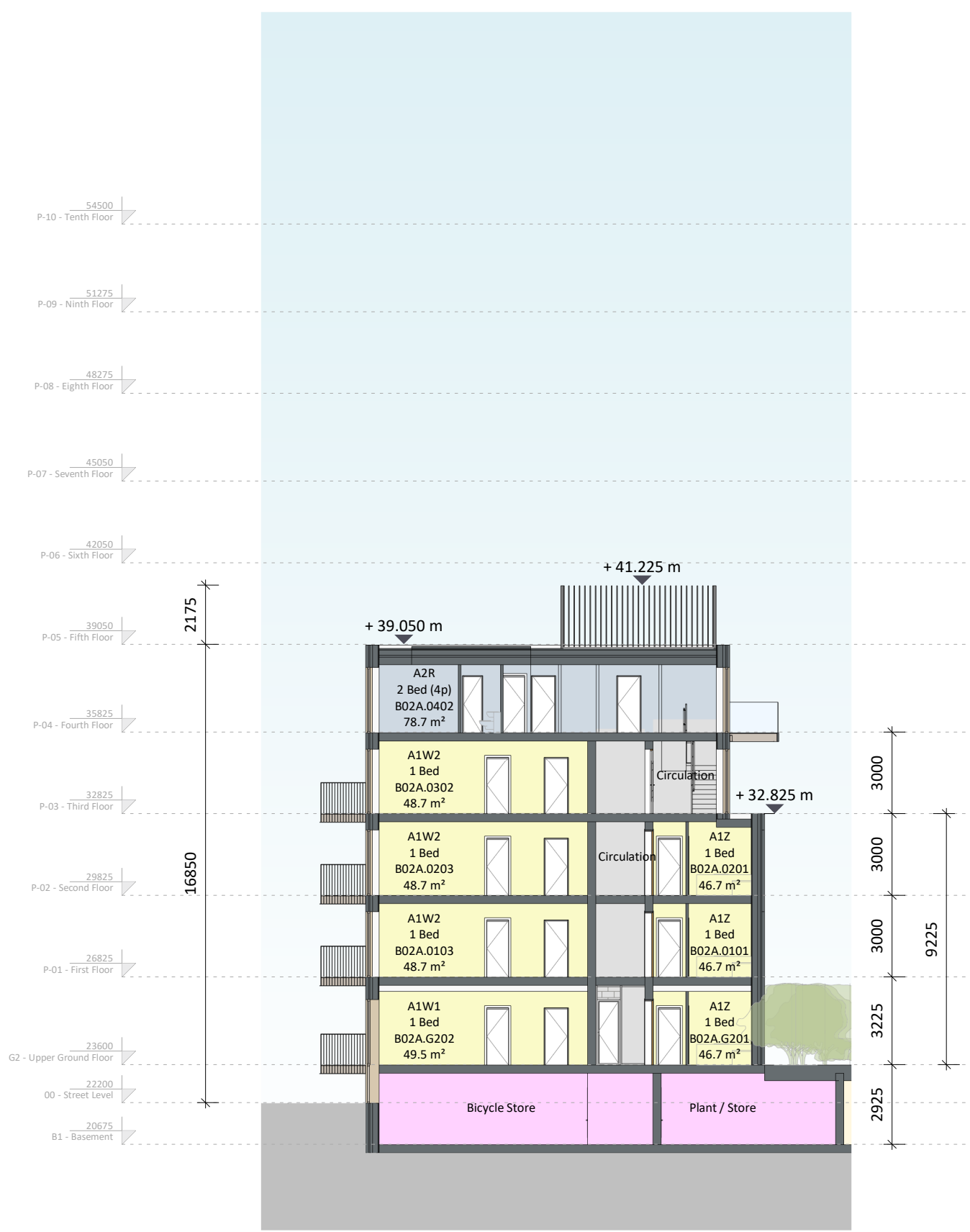
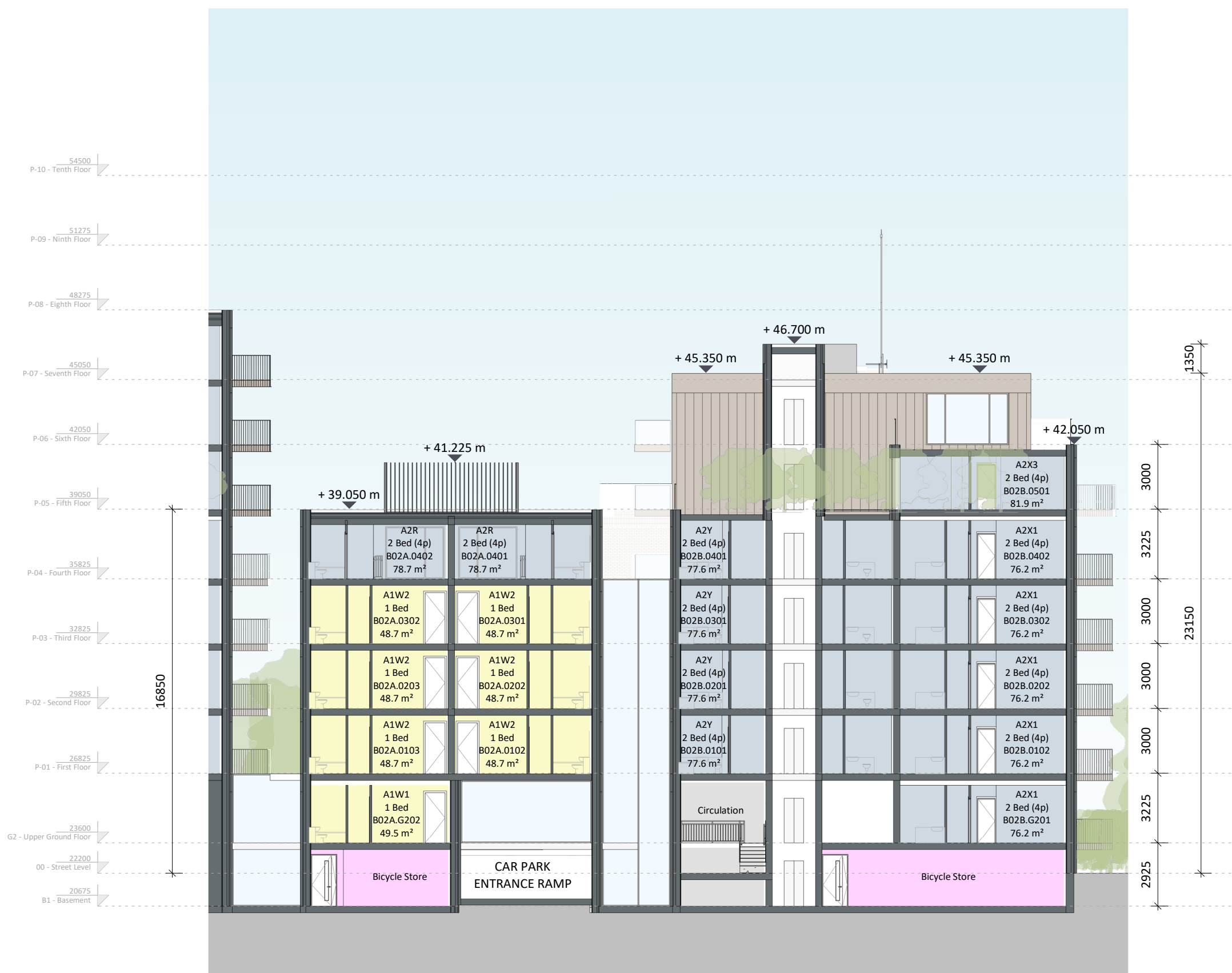




1 Block 02 N/S Section
1:200



2 Block 02 Link N/S Section
1:200

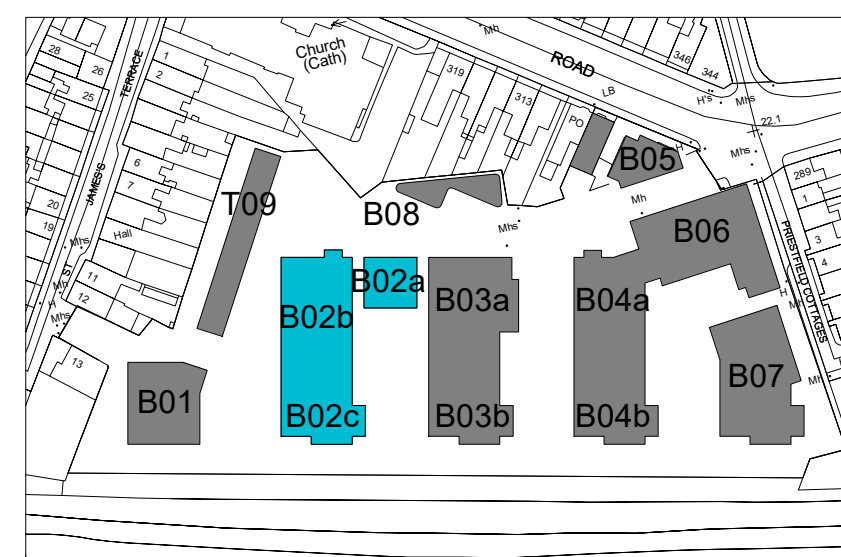


3 Block 02 E/W Section
1:200

Block 02 Sections

Materials Legend

1	Selected Render Finish
2	Selected Tile/Slate Finish to Roof
3a	Selected Red Brick
3b	Selected Red Brick - Soldier Course
4a	Selected Buff Brick (Light)
4b	Selected Buff Brick (Light) - Soldier Course
5a	Selected Buff Brick (Dark)
5b	Selected Buff Brick (Dark) - Soldier Course
6a	Selected White Brick
6b	Selected White Brick - Soldier Course
7	Selected White Stone Cladding
8	Selected Bronze Metal
9	Selected Light Grey Metal
10	Selected Glass
11	Selected Red Oxide Steel Frame
12	Selected Bronze Metal Cladding Panels



SITE KEY PLAN

Revision Description	Date	Rev. No.	Issued by
Stage 3 submission to ABP	16.03.2022	CD1	MH

Any reference to fire safety design or performance is presented for coordination purposes only. Refer only to the granted Fire Safety Certificate, and fire consultant's information for fire safety design, specification and performance.

Figured dimensions only to be used. This drawing is copyright of O'Mahony Pike Architects Ltd. All information is shared as per approved use in accordance with ISO19650-2:2018, Table 5; Standard Codes for Suitability of Models and Documents and the BEP. If the 'Status' field is empty, this information has been shared at 50 - WIP.

o'mahony pike

architecture | urban design
 email: info@omahonypike.com
 tel: +353 1 202 7400
 fax: +353 1 283 0822
 www.omahonypike.com

Dublin
 The Chapel
 Mount St. Anne's
 Milltown, Dublin 6
 D06 XNS2 Ireland

Cork
 One South Mall
 Cork City
 Co. Cork
 T12 CCN3 Ireland

Project No.: 20016
Project Lead: MH
Drawn By: Author
Purpose: PLANNING

Scale @ A1: 1:200
Date: 16.03.2022
Revision: C01
Status: A3

Project: White Heather SHD
Location: White Heather Industrial Estate, South Circular Road, Dublin 8
Client: U and I (White Heather) Limited

Drawing Title: Block 02 Sections
Drawing No.: 20016-OMP-B2-BZ-DR-A-3001

Source File: 20016-OMP-B2-BZ-DR-A-0001.rvt