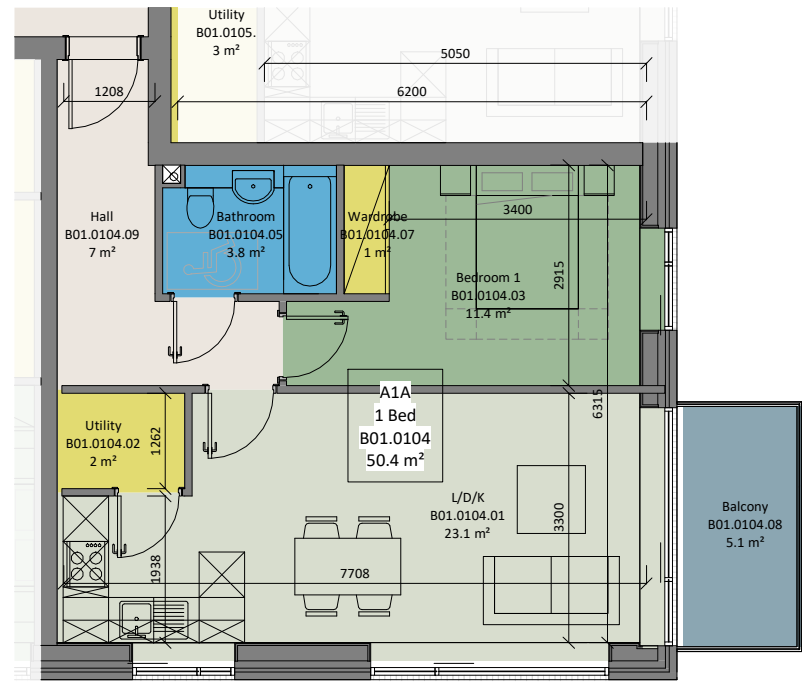
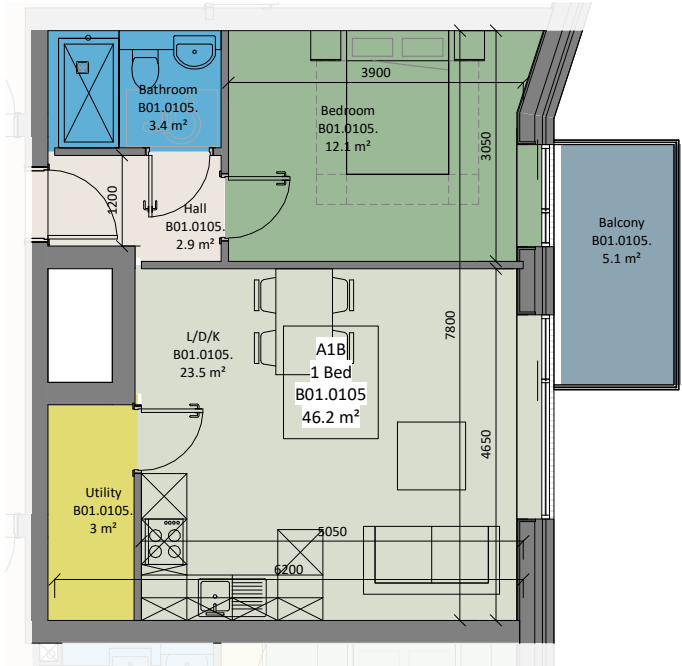


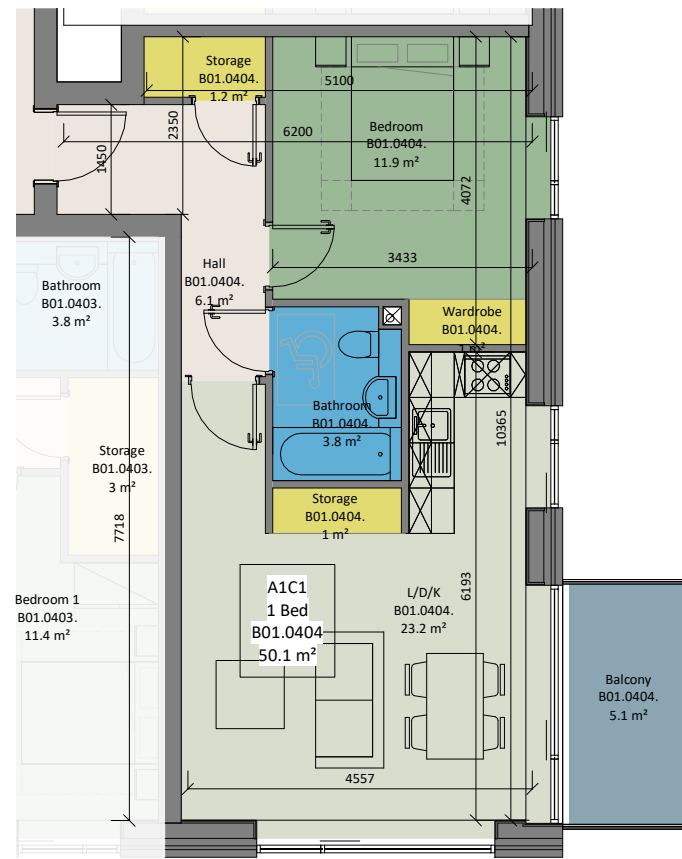
1 Unit Type A0ST
1:100



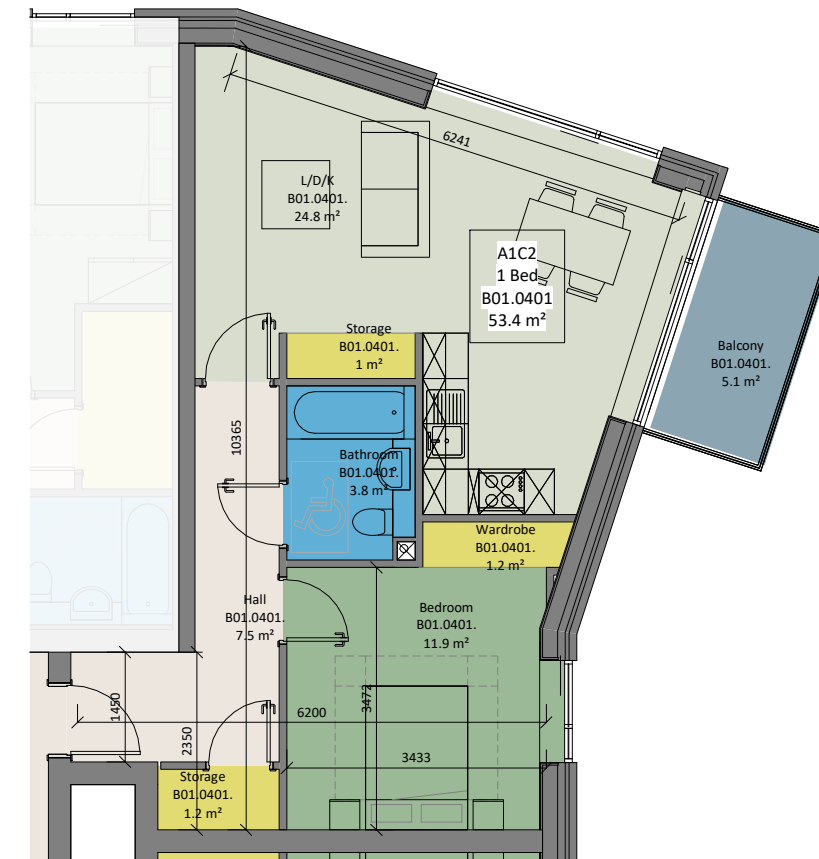
2 Unit Type A1A
1:100



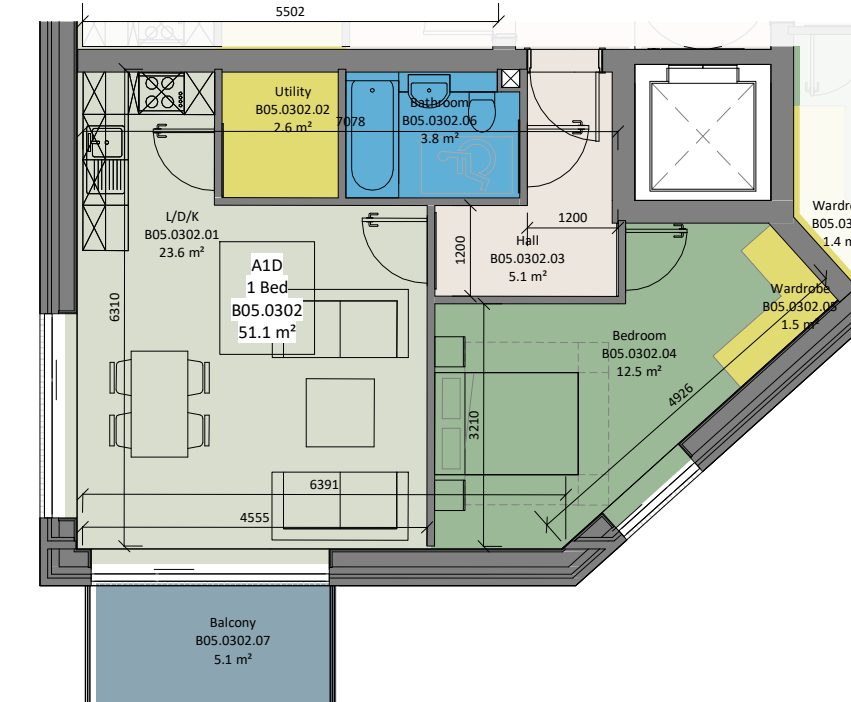
3 Unit Type A1B
1:100



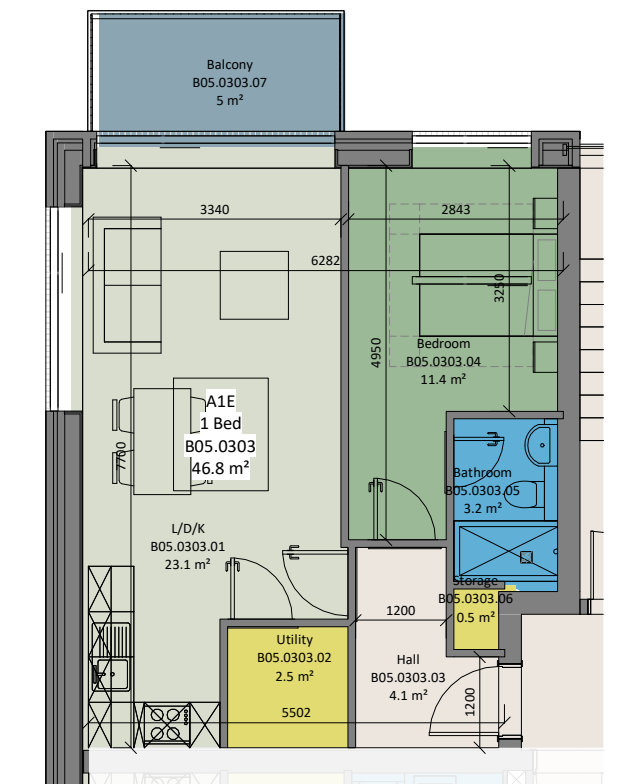
4 Unit Type A1C1
1:100



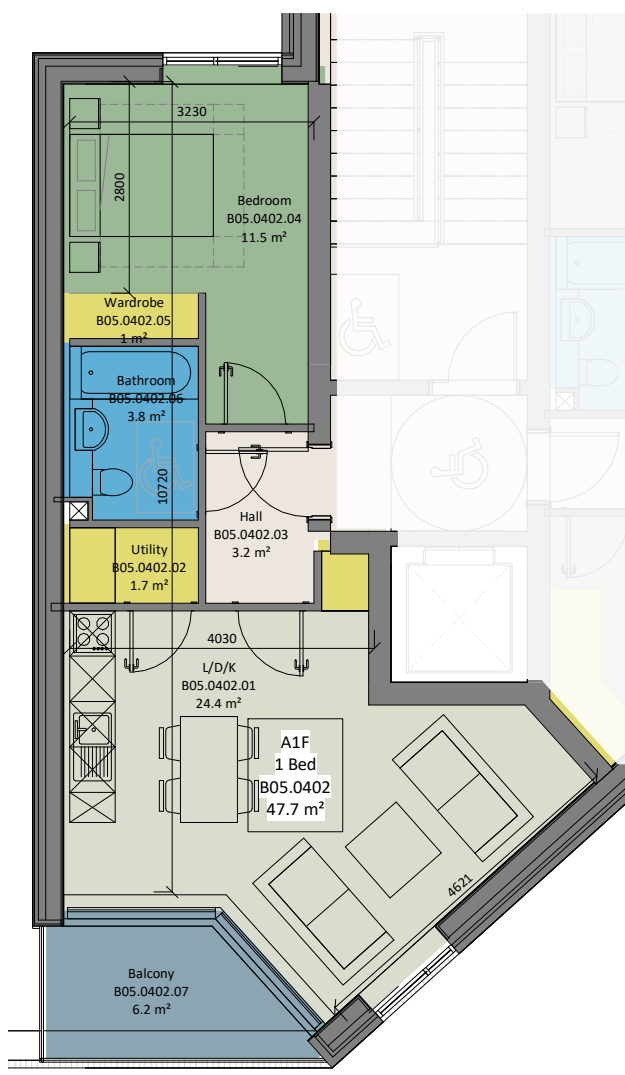
5 Unit Type A1C2
1:100



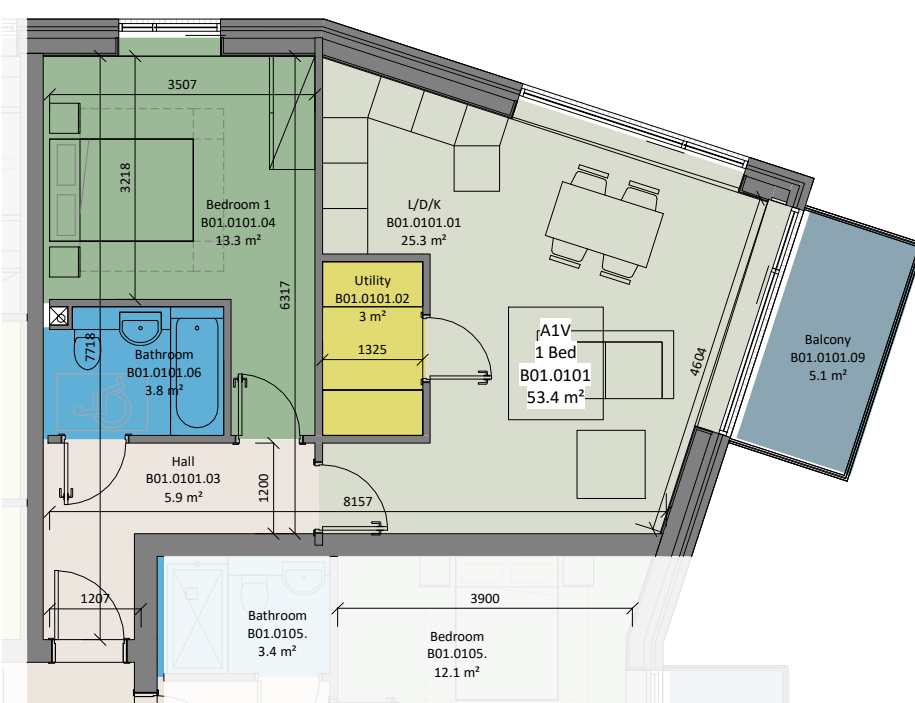
6 Unit Type A1D
1:100



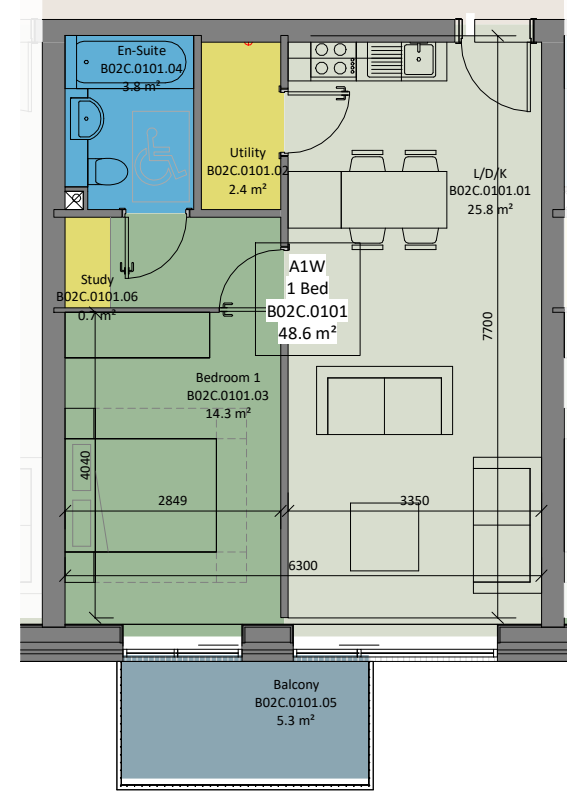
7 Unit Type A1E
1:100



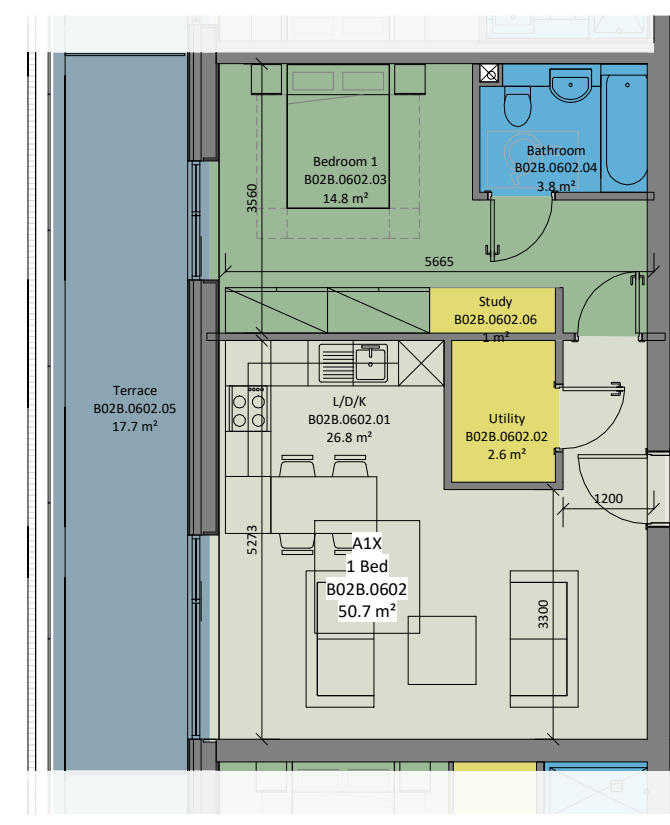
8 Unit Type A1F
1:100



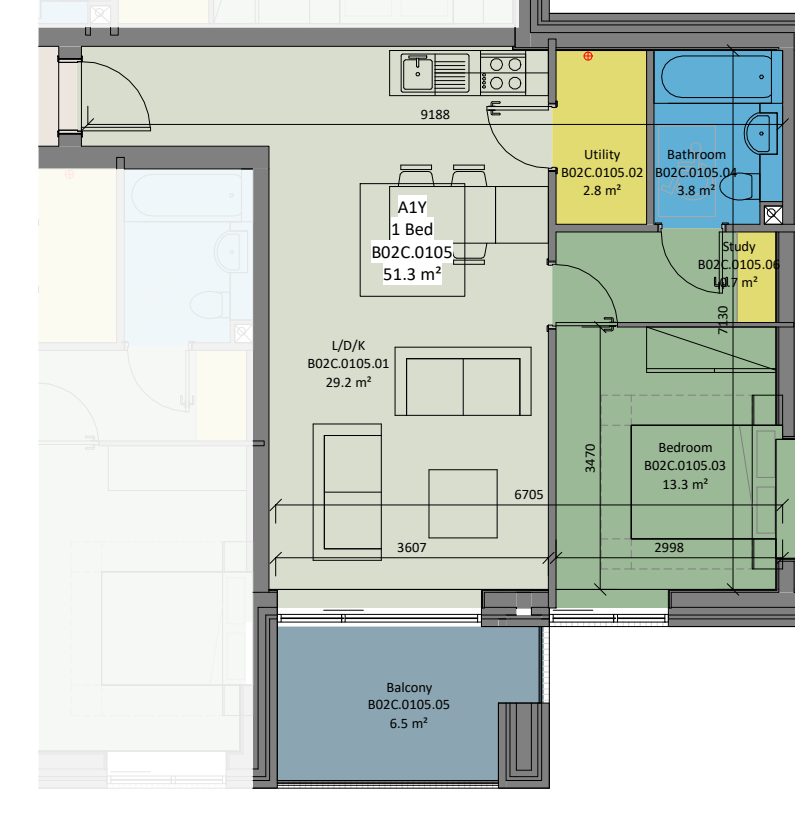
9 Unit Type A1V
1:100



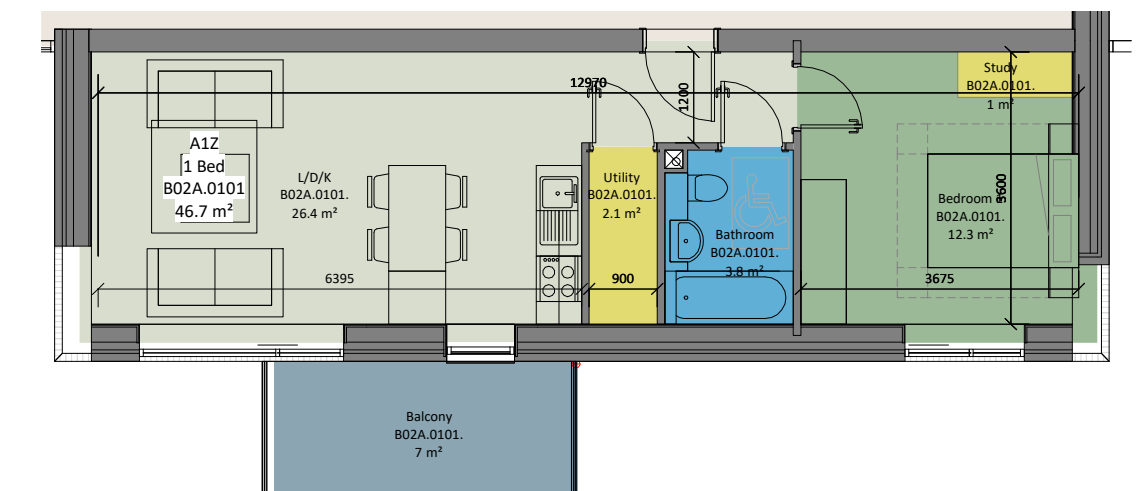
10 Unit Type A1W
1:100



11 Unit Type A1X
1:100



12 Unit Type A1Y
1:100



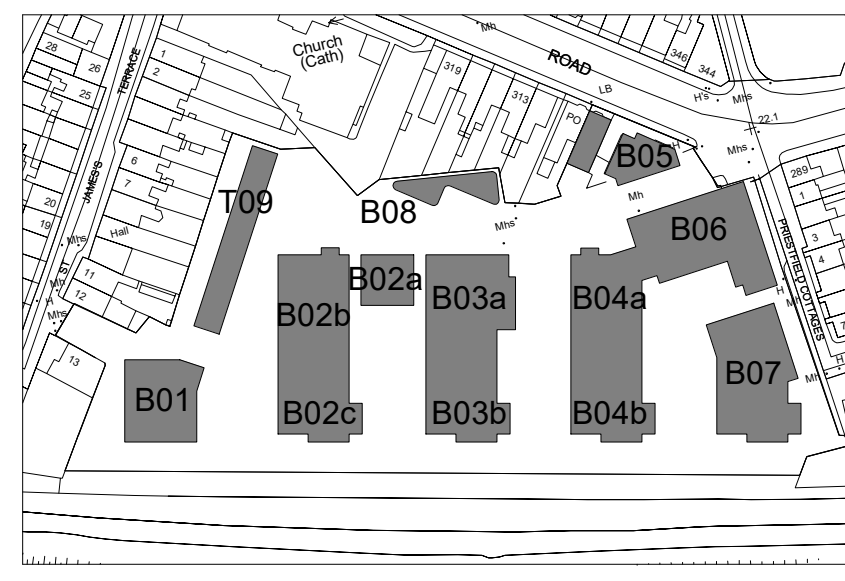
13 Unit Type A1Z
1:100

Typical Unit Types 01

Typical Apartment Type Areas		
Apartment Type Code	Unit Area	Count
A0ST	37.7	2
A1A	50.4	4
A1B	46.2	4
A1C1	50.1	1
A1D	51.1	2
A1E	46.7	1
A1F	46.7	1
A1V	53.4	4
A1W	48.6	78
A1X	50.7	1
A1Y	50.6	8
A1Z	46.7	3
A2A	73.2	8

Typical Apartment Type Areas		
Apartment Type Code	Unit Area	Count
A2B	73.4	2
A2G	106	1
A2H	106.1	1
A2I	78.6	1
A2J	65.2	3
A2K	78.7	2
A2L	75.3	4
A2M	74.1	4
A2N	75.5	23
A2O	77.6	4
A2P	75.5	17

Apartment Count per Block		
Block 01	B01	24
Block 02	B02A	12
Block 02	B02B	30
Block 02	B02C	42
Block 03	B03A	40
Block 03	B03B	37
Block 04	B04A	23
Block 04	B04B	49
Block 05	B05	10
Block 06	B06	29
Block 07	B07	32
Grand total:		328



SITE KEY PLAN

Revision Description	Date	Rev. No.	Issued by
Stage 3 submission to ABP	16.03.2022	C01	MH

Any reference to fire safety design or performance is presented for coordination purposes only. Refer only to the granted Fire Safety Certificate, and fire consultant's information for fire safety design, specification and performance.

Figured dimensions only to be used. This drawing is copyright of O'Mahony Pike Architects Ltd. All information is shared as per approved use in accordance with ISO19650-2:2018, Table 5; Standard Codes for Suitability of Models and Documents and the BEP. If the 'Status' field is empty, this information has been shared at 50 - WIP.

omahony pike

architecture | urban design
 email: info@omahonypike.com
 tel: +353 1 202 7400
 fax: +353 1 283 0822
 www.omahonypike.com

Dublin
 The Chapel
 One South Mall
 Mount St. Anne's
 Milltown, Dublin 6
 Co. Cork
 D06 XN52 Ireland

Cork
 One South Mall
 Cork City
 T12 CCN3 Ireland

Project No.: 20016
 Project Lead: MH
 Drawn By: KN/JW
 Purpose: PLANNING

Scale @ A1: 1:100
 Date: 16.03.2022
 Revision: C01
 Status: A3

Project: White Heather SHD
 Location: White Heather Industrial Estate, South Circular Road, Dublin 8
 Client: U and I (White Heather) Limited

Drawing Title: Typical Unit Types 01
 Drawing No.: 20016-OMP-AT-ZZ-DR-A-1200

Source File: 20016-OMP-ZZ-DR-A-0001.rvt